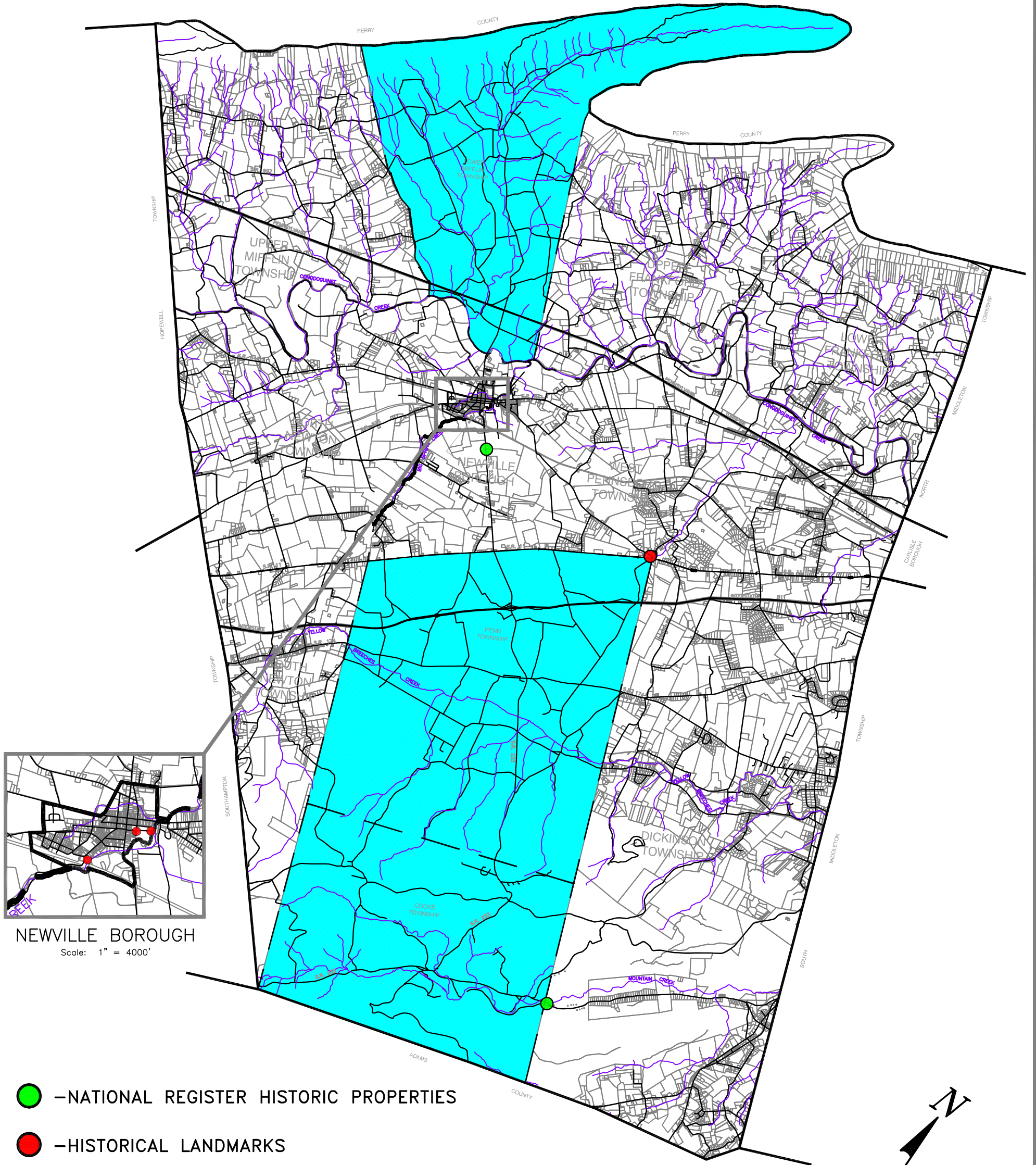
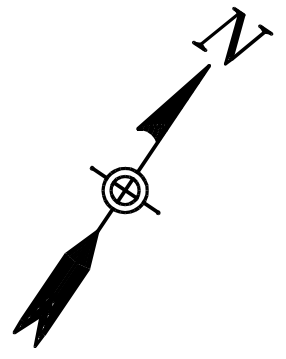


WESTERN CUMBERLAND COUNTY COUNCIL OF GOVERNMENTS JOINT COMPREHENSIVE PLAN HISTORICAL LANDMARKS MARCH, 2006



NEWVILLE BOROUGH
Scale: 1" = 4000'

- -NATIONAL REGISTER HISTORIC PROPERTIES
- -HISTORICAL LANDMARKS



Prepared By:

MMI martin and martin incorporated
phone: (717) 37 south main street • suite A
264-6759 chambersburg, pennsylvania . 17201

